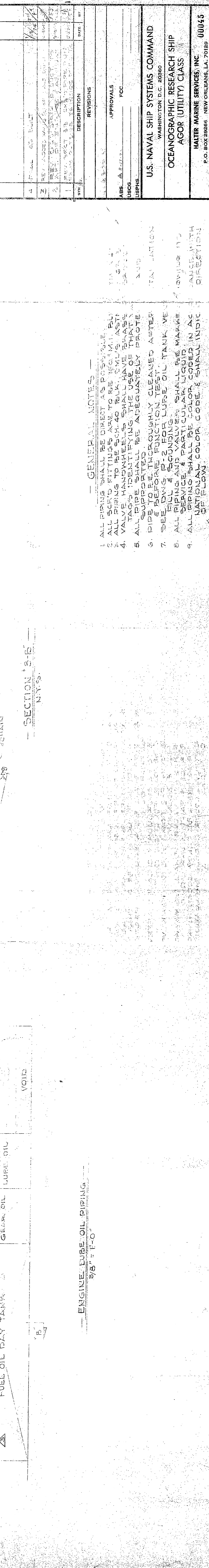
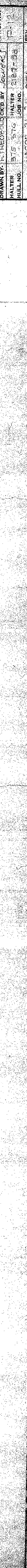


BILL OF MATERIALS

QTY	SIZE	DESCR.	PIECON	QOS	ITEM	UNIT	QTY	REMARKS
1	1 1/2"	DEMING PUMP	132	33	33	33		
2	1 1/2"	PIPE	1 1/2"	33	33	33		
3	1 1/2"	PIPE	1 1/2"	33	33	33		
4	1 1/2"	PIPE	1 1/2"	33	33	33		
5	1 1/2"	PIPE	1 1/2"	33	33	33		
6	1 1/2"	PIPE	1 1/2"	33	33	33		
7	1 1/2"	PIPE	1 1/2"	33	33	33		
8	1 1/2"	PIPE	1 1/2"	33	33	33		
9	1 1/2"	PIPE	1 1/2"	33	33	33		
10	1 1/2"	PIPE	1 1/2"	33	33	33		
11	1 1/2"	PIPE	1 1/2"	33	33	33		
12	1 1/2"	PIPE	1 1/2"	33	33	33		
13	1 1/2"	PIPE	1 1/2"	33	33	33		
14	1 1/2"	PIPE	1 1/2"	33	33	33		
15	1 1/2"	PIPE	1 1/2"	33	33	33		
16	1 1/2"	PIPE	1 1/2"	33	33	33		
17	1 1/2"	PIPE	1 1/2"	33	33	33		
18	1 1/2"	PIPE	1 1/2"	33	33	33		
19	1 1/2"	PIPE	1 1/2"	33	33	33		
20	1 1/2"	PIPE	1 1/2"	33	33	33		
21	1 1/2"	PIPE	1 1/2"	33	33	33		
22	1 1/2"	PIPE	1 1/2"	33	33	33		
23	1 1/2"	PIPE	1 1/2"	33	33	33		
24	1 1/2"	PIPE	1 1/2"	33	33	33		
25	1 1/2"	PIPE	1 1/2"	33	33	33		
26	1 1/2"	PIPE	1 1/2"	33	33	33		
27	1 1/2"	PIPE	1 1/2"	33	33	33		
28	1 1/2"	PIPE	1 1/2"	33	33	33		
29	1 1/2"	PIPE	1 1/2"	33	33	33		
30	1 1/2"	PIPE	1 1/2"	33	33	33		
31	1 1/2"	PIPE	1 1/2"	33	33	33		
32	1 1/2"	PIPE	1 1/2"	33	33	33		
33	1 1/2"	PIPE	1 1/2"	33	33	33		
34	1 1/2"	PIPE	1 1/2"	33	33	33		
35	1 1/2"	PIPE	1 1/2"	33	33	33		
36	1 1/2"	PIPE	1 1/2"	33	33	33		
37	1 1/2"	PIPE	1 1/2"	33	33	33		
38	1 1/2"	PIPE	1 1/2"	33	33	33		
39	1 1/2"	PIPE	1 1/2"	33	33	33		
40	1 1/2"	PIPE	1 1/2"	33	33	33		
41	1 1/2"	PIPE	1 1/2"	33	33	33		
42	1 1/2"	PIPE	1 1/2"	33	33	33		
43	1 1/2"	PIPE	1 1/2"	33	33	33		
44	1 1/2"	PIPE	1 1/2"	33	33	33		
45	1 1/2"	PIPE	1 1/2"	33	33	33		
46	1 1/2"	PIPE	1 1/2"	33	33	33		
47	1 1/2"	PIPE	1 1/2"	33	33	33		
48	1 1/2"	PIPE	1 1/2"	33	33	33		
49	1 1/2"	PIPE	1 1/2"	33	33	33		
50	1 1/2"	PIPE	1 1/2"	33	33	33		



SECTION 3-A
3/8" = 1'-0"



SECTION 3-B
3/8" = 1'-0"



GENERAL NOTES -
 1. ALL PIPING SHALL BE DIRECT AS POSITIVE.
 2. ALL PIPING TO BE 304L STAINLESS STEEL.
 3. ALL VALVE HANDWHEELS SHALL HAVE BRASS TAGS IDENTIFYING THE USE OF THAT TAGS.
 4. ALL PIPE SHALL BE ADEQUATELY PROTECTED BEFORE FUNCTION TEST.
 5. PIPE TO BE THOROUGHLY CLEANED AFTER SERVICE.
 6. ALL PIPING SHALL BE MARKED WITH NATIONAL COLOR CODE & SHALL INDICATE FLOW DIRECTION.

NO.	DATE	DESCRIPTION	BY	CHKD.
1	1/1/50	ISSUED FOR CONSTRUCTION	J. H. B.	J. H. B.
2	1/15/50	REVISION	J. H. B.	J. H. B.
3	1/20/50	REVISION	J. H. B.	J. H. B.
4	1/25/50	REVISION	J. H. B.	J. H. B.
5	1/30/50	REVISION	J. H. B.	J. H. B.

U.S. NAVAL SHIP SYSTEMS COMMAND
 WASHINGTON, D.C. 20380
 OCEANOGRAPHIC RESEARCH SHIP
 AGOR (UTILITY CLASS)
 HALTER MARINE SERVICES, INC.
 P.O. BOX 28286 - NEW ORLEANS, LA. 70128
 00045